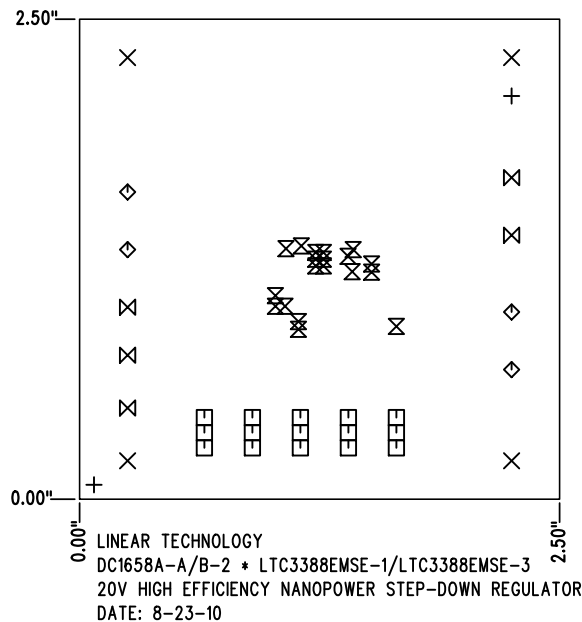


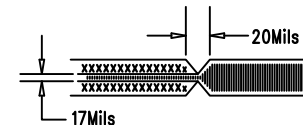
REVISION HISTORY				
ECO	REV	DESCRIPTION	APPR	DATE
-	2	PRODUCTION FAB	J.DREW	8-23-10

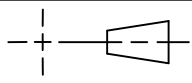

NOTES: UNLESS OTHERWISE SPECIFIED:

- ARTWORK P/N DEMO CIRCUIT 1658A-2
- FAB PER IPC-A-600. 4-Layers.
- MATERIAL: EPOXY FIBERGLASS, NEMA GRADE FR-4
.062 +/- .005 INCH THICKNESS WITH 2 OZ.
COPPER FINISH ON TWO OUTER LAYERS AND
1 OZ. COPPER ON FOUR INTERNAL LAYERS.
FLAMMABILITY RATING: 94 V-2 MINIMUM .
- SIZE: CUT TO DIMENSIONS AND TOLERANCES SHOWN.
0.00 ARE PRIMARY DATUMS.
- BOARD: SELECTIVE PLATED BOARD. SOLDER
MASK OVER BARE COPPER, COLOR, GREEN LPI.
GOLD IMMERSION (ENIG) BOTH SIDES.
SILKSCREEN : USING WHITE NON-CONDUCTIVE INK.
PLATE THRU ALL HOLES WITH COPPER
MIN. PLATING THICKNESS: 1 OZ. EXCEPT
WHERE PLATING NOT REQUIRED
- DRILL: ALL HOLES SHALL BE DRILLED +/- .003 INCH
WITH RESPECT TO CTR. OF DRILLED PAD.
ALL HOLES FINISHED SIZE AFTER PLATING.
- DO NOT ALTER ARTWORK e.g. TO ADD LOGO OR DATE CODE OR
ELECTRICAL TEST STAMP, BUT YOU MAY MODIFY PAD SIZE TO
MEET END FINISH.
- SCORING FOR PANELIZED PCB: "PRODUCTION RUN ONLY"
- DO NOT ALTER SOLDER MASK MAINTAIN .0018" OVERSIZE
ON SMT PADS. A .005" WEBBING IS REQUIRED BETWEEN SMD PADS.
- PCB'S ARE TO BE ROHS COMPLIANT.
- BOARDS WILL BE SERIALIZED USING BOTTOM SILKSCREEN DIGITS 8888.



SIZE	QTY	SYM	PLATED	TOL
72	2	+	NO	+/- .003 in
190	4	X	YES	+/- .003 in
31	15	□	YES	+/- .003 in
94	4	◇	YES	+/- .003 in
15	19	⊗	YES	+/- .003 in
63	5	⊠	YES	+/- .003 in



UNLESS OTHERWISE SPECIFIED DIMENSIONS ARE IN INCHES TOLERANCES ON ANGLE ±1 0.XXX" = ±0.01" 0.XXX" = ±0.005" INTERPRET DIM AND TOL PER ASME Y14.5M-1994 THIRD ANGLE PROJECTION 	APPROVALS		 1630 MCCARTHY BLVD MILPITAS, CA 95035 PH: (408)432-1900 www.linear.com LTC CONFIDENTIAL- FOR CUSTOMER USE ONLY
	PCB DES.	NC	DATE
	APP ENG.	J.DREW	8-23-10
	THIRD ANGLE PROJECTION		
DO NOT SCALE DRAWING			SCALE: NONE
TITLE: FABRICATION DRAWING: 20V HIGH EFFICIENCY NANOPower STEP-DOWN REGULATOR			
SIZE	IC NO.	REV.	
N/A	LTC3388EMSE-1/LTC3388EMSE-3 DEMO CIRCUIT 1658A-A/B	2	
FILENAME: DC1658A-2.PCB			SHT 1 of 1